

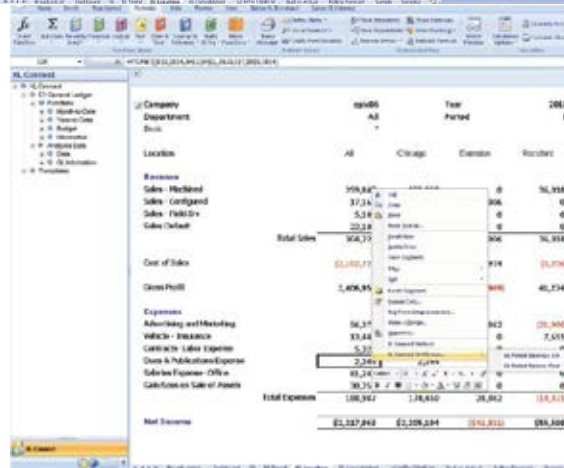
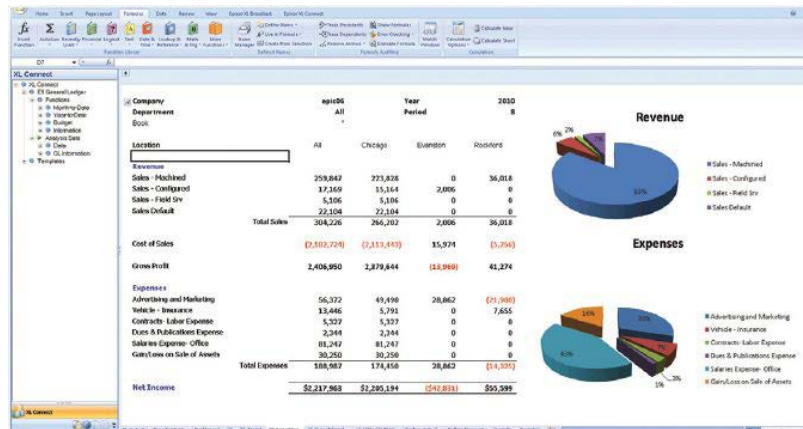
Epicor XL Connect



Epicor XL Connect is a business reporting and analytics solution that is designed to enable real-time, secured access to your Epicor data from Microsoft® Office Excel®. It enables simple, yet powerful capabilities to anyone who uses spreadsheets to gather and arrange business data.

Epicor XL Connect makes it easy for users to create and refresh information in Excel, combining Epicor data with additional lookups and calculations to get the answers you need without the usual challenges of gathering and refreshing the source data.

- ▶ Pre-integrated to Epicor
- ▶ Real-time reporting
- ▶ Leverage your existing spreadsheets
- ▶ Drag-and-drop report creation
- ▶ Refresh reports on your own
- ▶ Consolidate companies from multiple databases
- ▶ Multi-dimensional drill-down
- ▶ Automatic creation of PivotTables™ for detailed analysis



Features

Simple

- ▶ Leverage existing spreadsheets
- ▶ Easy for any Excel user to master in no time
- ▶ Includes dozens of functions and ready-to-use analysis sets
- ▶ Eliminate the need for complex queries
- ▶ Copy data-gathering functions across multiple cells just like you would any formula Excel
- ▶ Pick the data you want in each cell

Powerful

- ▶ Refresh and reformat reports on the fly
- ▶ Multi-dimensional drill-down
- ▶ Drag and drop reporting
- ▶ Consolidate information from multiple company databases
- ▶ Retain all your formatting and cell arrangements

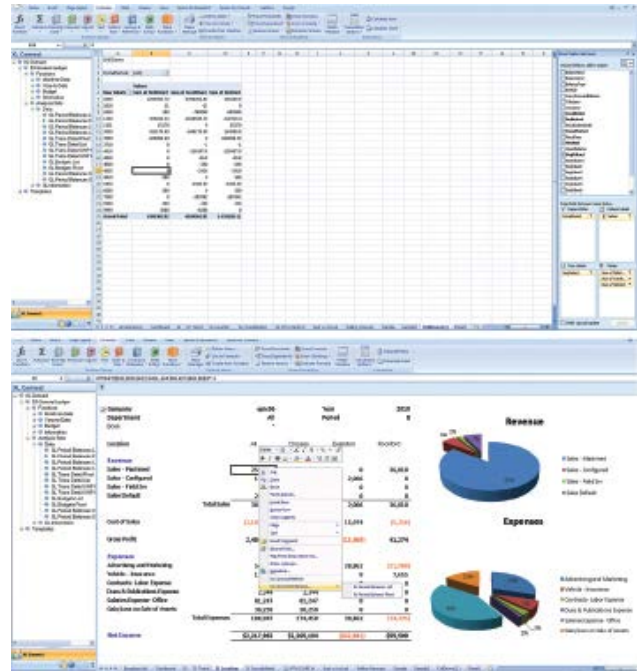
Immediate

- ▶ Pre-integrated to your business data
- ▶ Post entries into your system and have the information reflected in reports immediately
- ▶ Generate reports faster with in-memory caching

- ▶ Reduce closing cycles
- ▶ Respond quickly to ad hoc requests from information
- ▶ Provide workbooks that decision-makers can refresh and filter themselves

Robust reporting and analysis

With Epicor XL Connect, you can create reports with drag-and-drop ease, utilize reporting templates, and create fully integrated reports from existing spreadsheets all within Excel.



About Epicor

Epicor Software Corporation drives business growth. We provide flexible, industry-specific software that is designed around the needs of our manufacturing, distribution, retail, and service industry customers. More than 40 years of experience with our customers' unique business processes and operational requirements is built into every solution—in the cloud, hosted, or on premises. With a deep understanding of your industry, Epicor solutions spur growth while managing complexity. The result is powerful solutions that free your resources so you can grow your business. For more information, [connect with Epicor](#) or visit www.epicor.com.



Contact us for more information on Epicor Products and Services

+1.800.999.6995 info@epicor.com www.epicor.com

Corporate Office
804 Las Cimas Parkway
Austin, TX 78746
USA
Toll Free: +1.888.448.2636
Direct: +1.512.328.2300
Fax: +1.512.278.5590

Latin America and Caribbean
Blvd. Antonio L. Rodriguez #1882 Int. 104
Plaza Central, Col. Santa Maria
Monterrey, Nuevo Leon, CP 64650
Mexico
Phone: +52.81.1551.7100
Fax: +52.81.1551.7117

Europe, Middle East and Africa
No. 1 The Arena
Downshire Way
Bracknell, Berkshire RG12 1PU
United Kingdom
Phone: +44.1344.468468
Fax: +44.1344.468010

Asia
238A Thomson Road #23-06
Novena Square Tower A
Singapore 307684
Singapore
Phone: +65.6333.8121
Fax: +65.6333.8131

Australia and New Zealand
Suite 2 Level 8,
100 Pacific Highway
North Sydney, NSW 2060
Australia
Phone: +61.2.9927.6200
Fax: +61.2.9927.6298

The contents of this document are for informational purposes only and are subject to change without notice. Epicor Software Corporation makes no guarantee, representations or warranties with regard to the enclosed information and specifically disclaims, to the full extent of the law, any applicable implied warranties, such as fitness for a particular purpose, merchantability, satisfactory quality or reasonable skill and care. This document and its contents, including the viewpoints, dates and functional content expressed herein are believed to be accurate as of its date of publication, June 2015. The usage of any Epicor software shall be pursuant to the applicable end user license agreement and the performance of any consulting services by Epicor personnel shall be pursuant to applicable standard services terms and conditions. Usage of the solution(s) described in this document with other Epicor software or third party products may require the purchase of licenses for such other products. Epicor and the Epicor logo are trademarks or registered trademarks of Epicor Software Corporation, registered in the United States, certain other countries and/or the EU. Microsoft, Excel, and PivotTable are either registered trademarks or trademarks of Microsoft Corporation in the United States and/or other countries. All other trademarks mentioned are the property of their respective owners. Copyright © 2015 Epicor Software Corporation. All rights reserved.